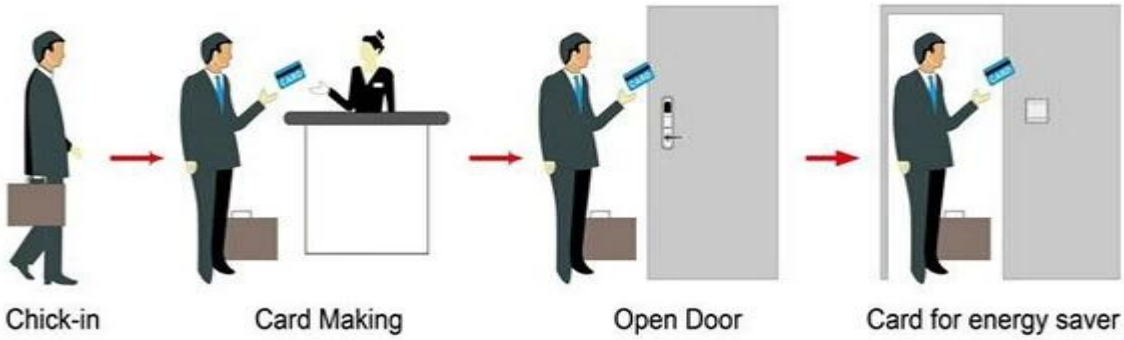


Model PY-8017 is a smart card system that can be used in various applications:

- A: MIFARE® smart card system, (USB interface, can be used in various applications)
- B: Temic smart card system, (USB interface, can be used in various applications)
- C: EM smart card system, (can be used in various applications)

### Smart Card Basic Function



### Smart Card Extensive Function



Thickness: 0.8mm  
 Response time: < 0.1s  
 Frequency: 32-60 kHz  
 Customized: customerized  
 Applications: Elevator, Dining, Sports, Shopping, Energy Saver, etc.  
 Price: 1 card / 100 cards / 1000 cards / 10000 cards / 100000 cards / 1000000 cards  
 OEM / ODM  
 OS: Windows XP / 2000 / 2003/2007  
 Interface: hassel USB



PRODUCT DISPLAY



**HOTEL LOCK SYSTEM**  
ONE-CARD-PASS



1. 系统由数据收集器、门锁管理软件、读卡器、RF卡、酒店锁和增益电源开关组成。 (Data collector = 数据收集器) --- 系统由数据收集器、门锁管理软件、读卡器、RF卡、酒店锁和增益电源开关组成。

2. 每個組裝完的組件要檢查好每個組件每個零件 (1pcs/組件)--
3. 組裝完 (組裝完 = 組裝完 組件)--組裝完 組裝完 組件 每個 零件
4. 組裝完 (組裝完 每個 組裝完 每個 零件 3 個 =)--組裝完 組裝完 每個 零件
5. 組裝完 組裝完 (1pcs/組件, 組裝完)--組裝完 每個 組裝完 組裝完 每個 零件 每個 組裝完 組裝完 每個 零件
6. 組裝完 (組裝完)--組裝完 組裝完 組裝完 組裝完 每個 零件 每個 零件 組裝完 組裝完 組裝完

組裝完 組裝完 每個 組裝完 組裝完:



組裝完 組裝完 每個 組裝完 組裝完:



□□□□ □□□□ □□ □□ □□□□ □□□□□□:



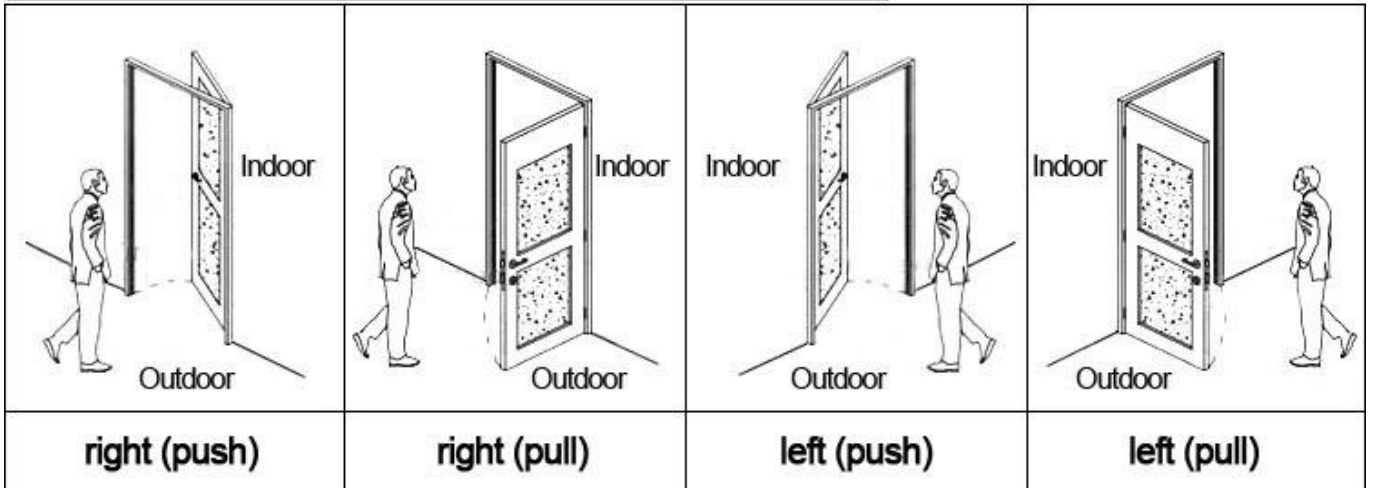
□□□□ □□□□□□ □□ □□□□□□□□ □□ □□□□□□:



**Accessories list reminder:**



**Please confirm door opening direction as below 4 types:**



□□□□□□□□ □□□□□□□□:

□□□□ □□□□□□□□

□□ □□□□□□, □□ □□□□ □□□□□□ □□□□ □□ □□ □□□□□□□□□□, □□ □□ □□□□□

□□□□ □□□□□□□□

Elecator □□ □□□□ □□ □□ □□□□□□□□□□, □□ □□ □□□□□

□□□□ □□□□□□

□□□□□□ □□ □□□□ □□ □□□ □□□□□ □□□□□, □

Welcome your inquiry

